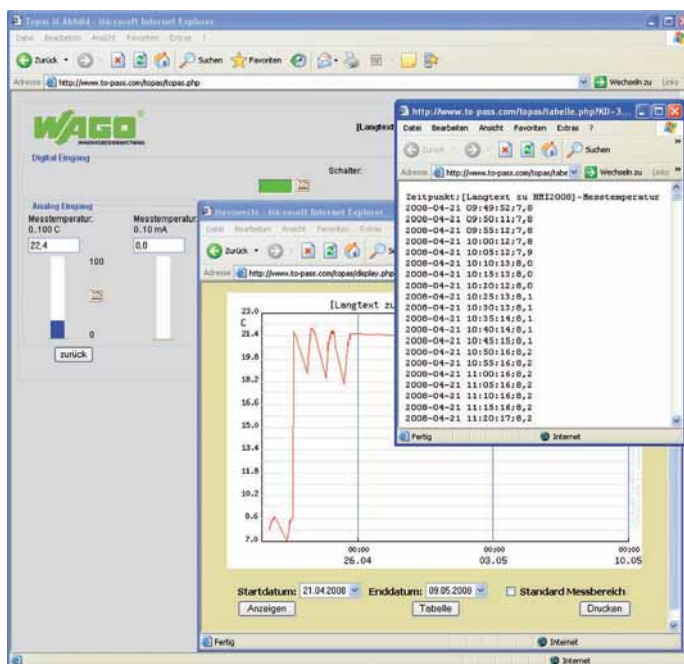


1 TO-PASS® Web Portal

28 WEB portal for visualizing and archiving measured values and messages



The TO-PASS® product family is designed for wireless communication of signals and messages. Connection is established via the GSM global mobile radio network. Beyond other communication channels (e.g., email, SMS or fax), the devices can also transmit data to a Web server via Web functionality. This allows the creation of a permanent GPRS connection that's similar to a dedicated line.

The process image (i.e., states and values of all digital and analog inputs of a TO PASS® telecontrol module) is transmitted to the Web server with a time stamp at a configurable interval and then stored in the database. Standard data loggers and the cumbersome process of reading out data are no longer necessary. Controlling and managing data is simplified by using an Internet browser via: <http://www.to-pass.com>.

With the base module, a user receives a designated area on the Web portal. Access is protected with a username and password. Depending on the expansion level (starter, standard, unlimited), a varying number of devices can log into the portal.

connected devices to be recorded and displayed from 90 minutes to 512 days. Data can also be exported in CSV format.

The "Admin" option is an addition to the base module. It allows the user to assign additional usernames with passwords, as well as customers and devices with different access authorizations.

The "Alarm" option is an addition to the base module. It allows the module to display and administer alarms generated from analog, digital and MODBUS values. Using analog values, up to four limit values can be configured for each measurement. An alarm list allows all alarms to be displayed and acknowledged.

This option also allows the user to configure the recipients and the time that an alarm will be sent to them via SMS or e-mail.

The usage rights for the base module with "Admin" and "Alarm" options must be purchased once. Afterward, just a low flat-rate fee will be charged monthly.

The data recorder function allows digital, analog and MODBUS data from

Description	Item No.	Pack. Unit
TO-PASS® Web Portal "Basic Unlimited" ¹⁾	761-700	1
TO-PASS® WEB Portal "Basic Starter" ²⁾	761-700/000-005	1
TO-PASS® Web Portal "Basic Standard" ³⁾	761-700/000-020	1
TO-PASS® Web Portal, monthly user fees	761-701	1
TO-PASS® Web Portal "Admin Unlimited" ¹⁾	761-702	1
TO-PASS® Web Portal "Admin Starter" ²⁾	761-702/000-005	1
TO-PASS® Web Portal "Admin Standard" ³⁾	761-702/000-020	1
TO-PASS® Web Portal "Alarm Unlimited" ¹⁾	761-703	1
TO-PASS® Web Portal "Alarm Starter" ²⁾	761-703/000-005	1
TO-PASS® Web Portal "Alarm Standard" ³⁾	761-703/000-020	1
Individual TO-PASS® Web Portal	761-704	1

¹⁾ Unlimited number of devices

²⁾ Maximum 5 devices

³⁾ Maximum 20 devices

Technical Data	
System requirements	
Web Browser	Microsoft® Internet Explorer with Internet access
User administration	via user name and password
No. of devices	unlimited
Device activation	via Internet
Configuration of measured values	via Internet
History of measured values	unlimited number of data sets
Display of measured values	Table and graphical display
Evaluation of measured values	Graphical evaluation of measured values
Export of measured values	CSV format (MS Excel compatible)
Internet Explorer is a registered trademark of Microsoft Corporation	